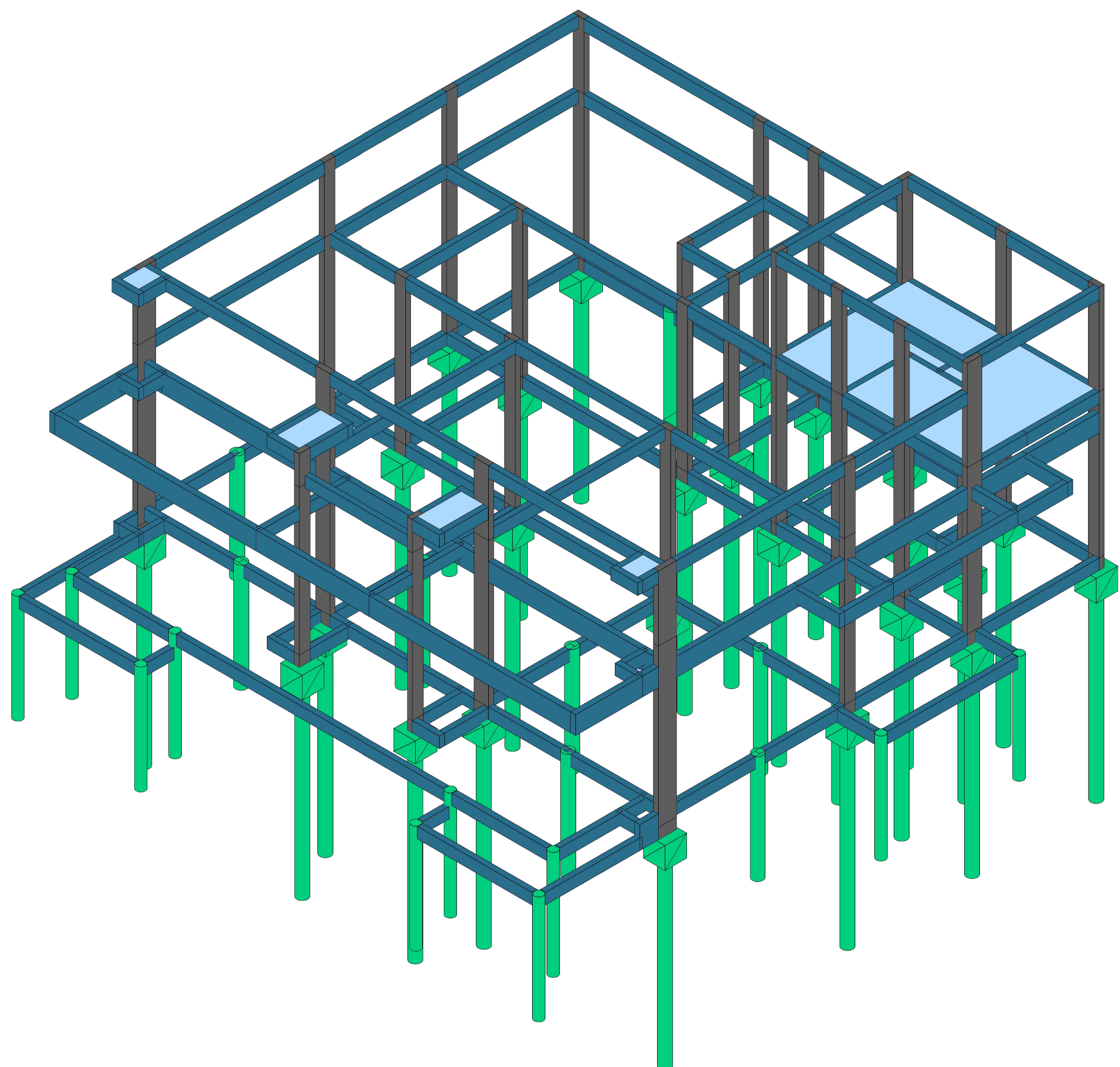
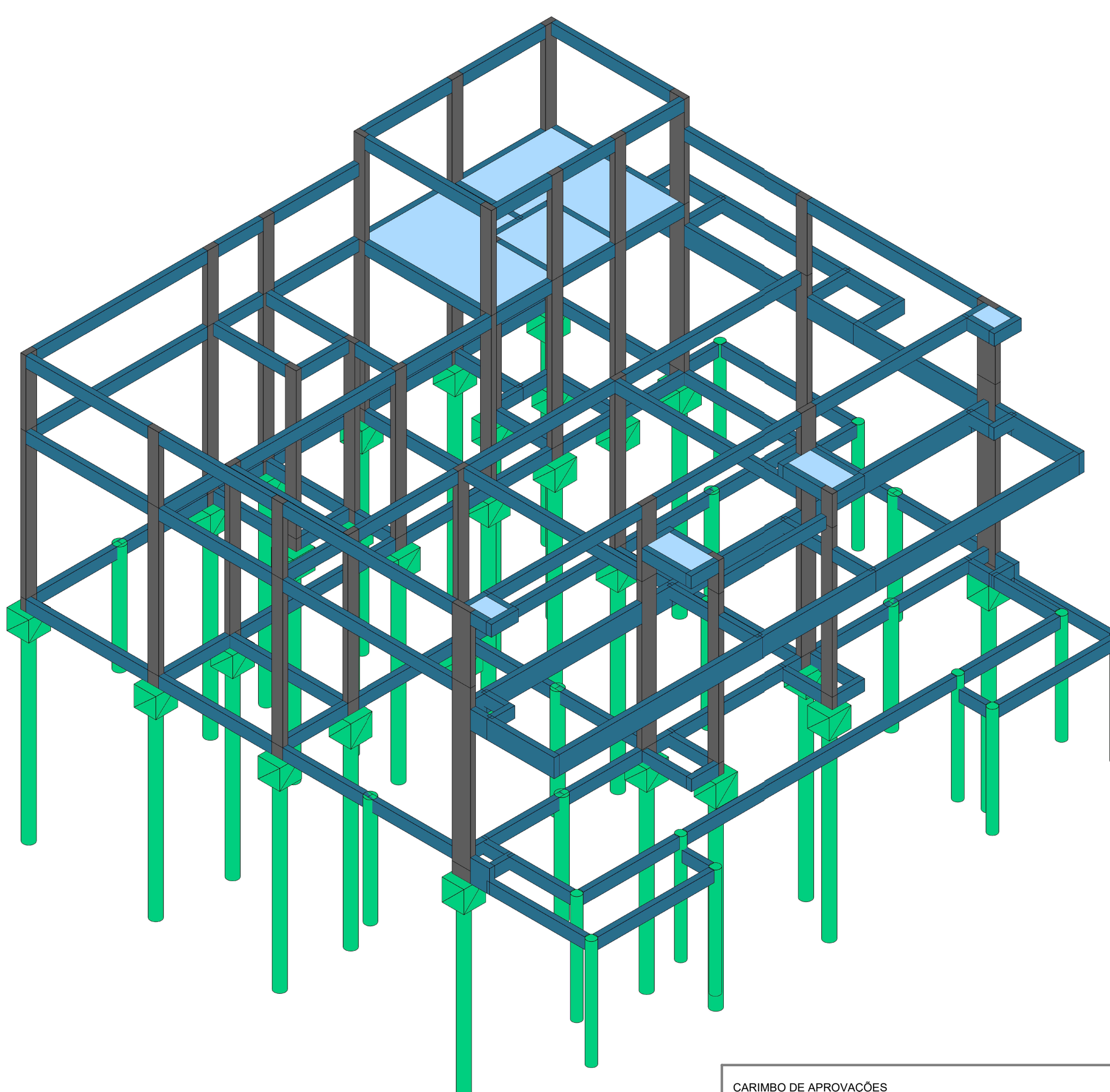


Planta de localização
escala 1:50

VISTA 3D FRONTAL DIREITA

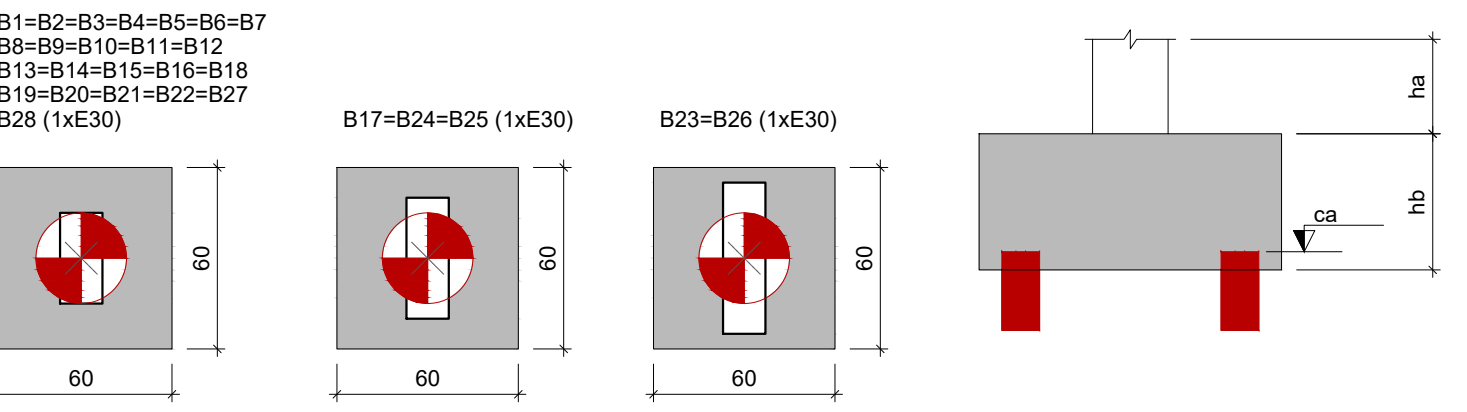


VISTA 3D FRONTAL ESQUERDA

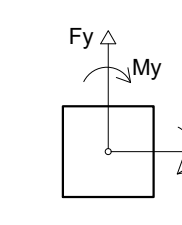


Nome	Sepção	Pier				Fundação				Bloco										
		X (cm)	Y (cm)	Carga Máx. (tf)	Carga Mín. (tf)	Px Máximo (kgf)	Px Negativo (kgf)	Py Máximo (kgf)	Py Negativo (kgf)		Nome (Lado B)	H1 (cm)	H2 (cm)	Estação	Base tab. (cm)					
C1	-	1707.39	1419.98	0.6	0.1	0	-200	0	0	0.1	0.0	0	0	0	E30	32				
C2	-	1707.39	1039.97	0.7	0.2	100	0	0	0	0.0	0.0	0	0	0	E30	32				
C3	-	197.03	302.50	1.5	1.1	200	0	100	0	0.1	0.0	0.0	0	0	E30	32				
C4	-	482.58	302.50	1.1	0.7	100	0	0	-100	0.0	-0.1	0.1	0.0	0.0	E30	32				
C5	-	1246.89	302.50	1.1	0.7	100	0	200	0	0.2	0.0	0.1	0.0	0.0	E30	32				
C6	-	1531.89	302.50	1.5	1.1	200	0	100	0	0.1	0.0	0	0	0	E30	32				
C7	-	142.03	207.47	1.7	1.2	300	0	0	0	0.0	0.0	0.0	-0.3	0.0	E30	0				
C8	-	482.58	207.47	0.6	0.3	100	0	100	0	0.1	0.0	0.0	0.0	0.0	E30	0				
C9	-	1246.89	207.47	0.6	0.3	100	0	0	0	0.0	0.0	0.0	0.0	0.0	E30	0				
C10	-	1586.89	207.47	1.6	1.2	200	0	100	0	0.1	0.0	0.0	-0.3	0.0	E30	0				
E1	-	399.53	1781.96	2.5	1.9	100	0	100	0	0.1	0.0	0.0	0.0	0.0	E30	35				
E2	-	1337.38	1072.47	2.6	2.1	100	0	0	-200	0.0	-0.2	0.1	0.0	0.0	E30	35				
E3	-	142.03	814.97	2.4	1.8	100	0	100	0	0.1	0.0	0.1	-0.2	0.0	E30	35				
E4	-	657.02	814.97	2.6	2.1	100	0	100	0	0.1	0.0	0.0	-0.2	0.0	E30	35				
E5	-	1071.88	814.97	2.7	2.1	100	0	100	0	0.1	0.0	0.1	-0.2	0.0	E30	35				
E6	-	1586.89	814.97	2.4	1.8	100	0	0	0	0.1	0.0	0.1	0.0	0.0	E30	35				
E7	-	410.78	557.47	2.6	2.0	0	0	0	0	0.2	0.0	0.0	0.0	0.0	E30	35				
E8	-	1318.39	557.47	2.6	2.0	0	0	0	-300	0.0	-0.1	0.1	0.0	0.0	E30	35				
P1	14x30	1400	1400	1759.47	5.1	4.8	100	-200	400	-200	0.0	-0.4	1.5	0.0	B1	60	55	E30	35	
P2	14x30	650.53	1759.47	5.7	4.0	100	-300	500	-300	0.8	0.0	1.0	0.0	0.2	B1	60	55	E30	35	
P3	14x30	802.52	1759.47	5.9	3.8	0	-100	400	-400	0.0	-0.7	0.9	0.0	0.3	B1	60	55	E30	35	
P4	14x30	1558.03	1751.47	7.9	7.0	400	-300	100	-200	0.4	-0.3	1.3	0.0	0.4	B4	60	55	E30	35	
P5	14x30	1323.03	1759.47	6.4	5.8	200	0	300	-300	0.1	-0.5	0.3	0.0	0.0	B1	60	55	E30	35	
P6	14x30	1579.89	1759.47	6.3	5.2	100	-100	300	-300	0.6	0.0	1.5	0.0	0.6	B6	60	55	E30	40	
P7	14x30	658.52	1542.47	2.6	1.7	400	-300	100	-200	0.0	-0.5	0.0	-0.7	0.7	B1	60	55	E30	35	
P8	14x30	802.52	1556.47	3.3	2.6	400	-300	100	0	0.5	0.0	0.0	-0.9	0.8	B1	60	55	E30	35	
P9	14x30	1541.03	1556.47	3.8	2.9	300	-200	0	0	-100	0.0	-0.7	0.4	0.0	0.0	B1	60	55	E30	35
P10	14x30	1404.53	1558.47	3.8	3.0	300	-300	200	0	0.8	0.0	0.4	0.0	0.0	B1	60	55	E30	35	
P11	14x30	142.03	1404.96	6.3	5.5	700	0	200	0	0.3	-0.2	0.0	-1.2	0.1	B1	60	55	E30	35	
P12	14x30	345.03	1396.96	6.9	6.3	0	-300	400	-300	0.0	-1.5	1.5	0.0	0.0	B1	60	55	E30	35	
P13	14x30	802.52	1396.97	6.3	5.9	100	-200	400	-200	1.7	0.0	0.0	-0.5	0.3	B1	60	55	E30	35	
P14	14x30	1558.03	1404.97	6.5	5.7	500	-400	100	-200	0.5	-0.2	0.0	-1.3	0.4	B1	60	55	E30	35	
P15	14x30	1323.03	1396.96	4.8	3.8	200	0	200	-300	0.0	-0.6	0.0	-0.6	0.6	B1	60	55	E30	35	
P16	14x30	1404.53	1396.97	4.9	3.9	200	0	200	-300	0.0	-0.6	0.0	-0.6	0.6	B1	60	55	E30	35	
P17	14x40	1587.89	1408.96	9.5	8.5	1100	-300	200	-200	0.7	0.0	0.0	-1.1	0.7	B1	60	60	E30	40	
P18	14x30	802.52	1396.97	6.3	5.8	600	-200	100	-200	0.0	-0.5	0.0	-1.3	0.6	B1	60	55	E30	35	
P19	14x30	345.03	1072.47	4.1	3.9	300	-400	0	-200	0.0	-0.6	0.0	-1.6	0.9	B1	60	55	E30	40	
P20	14x30	650.52	1072.47	4.0	3.8	200	0	400	-200	1.0	0.0	0.6	0.0	0.0	B1	60	55	E30	35	
P21	14x30	1079.88	1072.47	4.1	3.9	100	-200	400	-200	0.0	-1.1	0.8	0.0	0.0	B1	60	55	E30	35	
P22	14x30	1587.89	1064.47	7.0	6.8	500	-300	100	-200	0.9	0.0	0.0	-1.3	0.2	B1	60	60	E30	40	
P23	14x50	142.03	207.47	11.2	10.8	2000	-500	200	-100	0.0	-1.1	1.4	0.0	0.0	B1	60	75	E30	75	
P24	14x40	654.59	557.47	6.8	7.8	200	0	1100	-500	0.0	-1.4	0.1	-0.4	0.2	B1	60	55	E30	35	
P25	14x40	1584.89	556.98	8.7	7.1	200	0	400	-1300	1.4	0.0	0.0	-0.7	0.2	B1	60	55	E30	35	
P26	14x50	1587.89	557.47	10.7	10.3	1600	-800	100	-100	1.0	0.0	1.5	0.0	0.0	B1	60	75	E30	75	
P27	14x30	707.03	430.47	6.8	4.9	400	-600	0	0	0.3	0.0	0.1	-0.5	0.2	B1	60	55	E30	38	
P28	14x50	1022.48	430.47	6.3	4.5	300	-800	200	0	0.0	-0.1	0.2	-0.4	0.2	B1	60	55	E30	38	

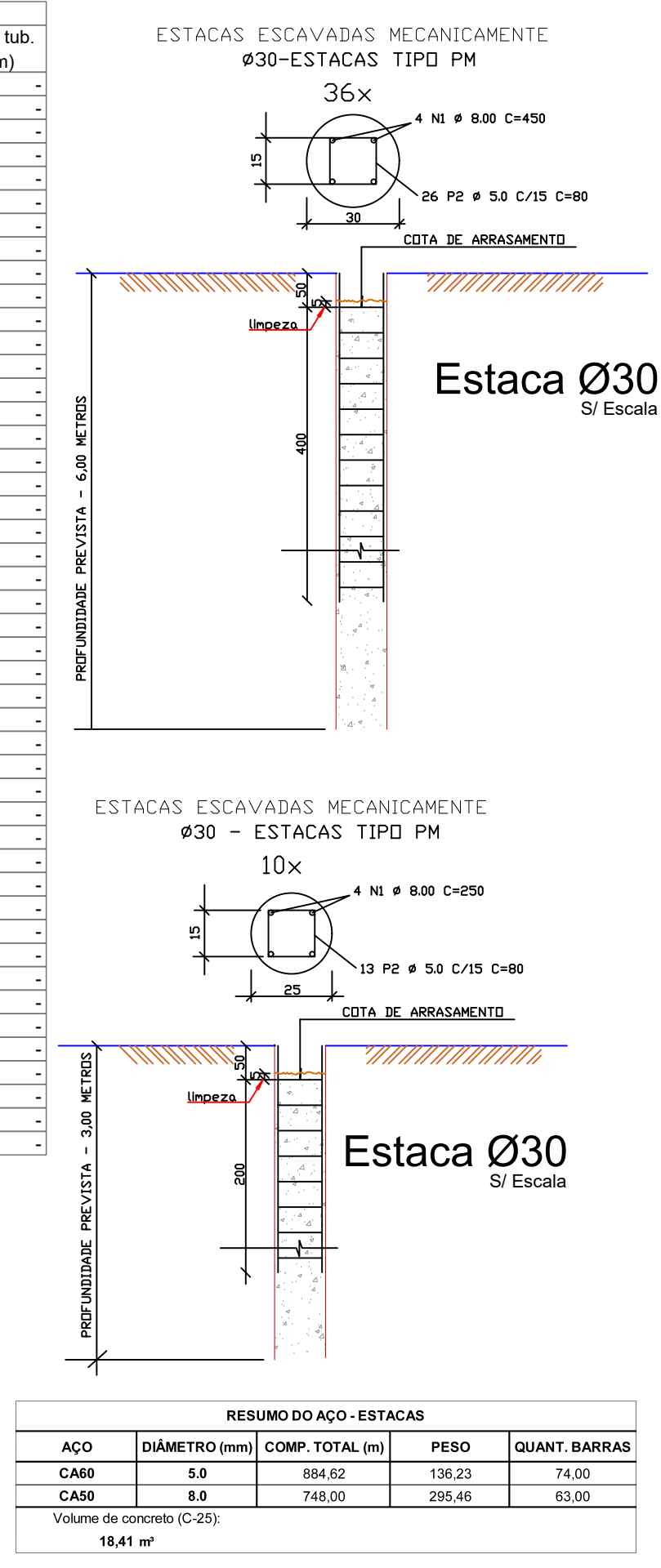
Os valores indicados neste quadro são os valores máximos obtidos após a verificação de todas as combinações definidas para as fundações. Para interpretação dos resultados, consulte o manual de utilização do software. Os valores negativos representam esforços de tração, os positivos representam esforços de compressão.



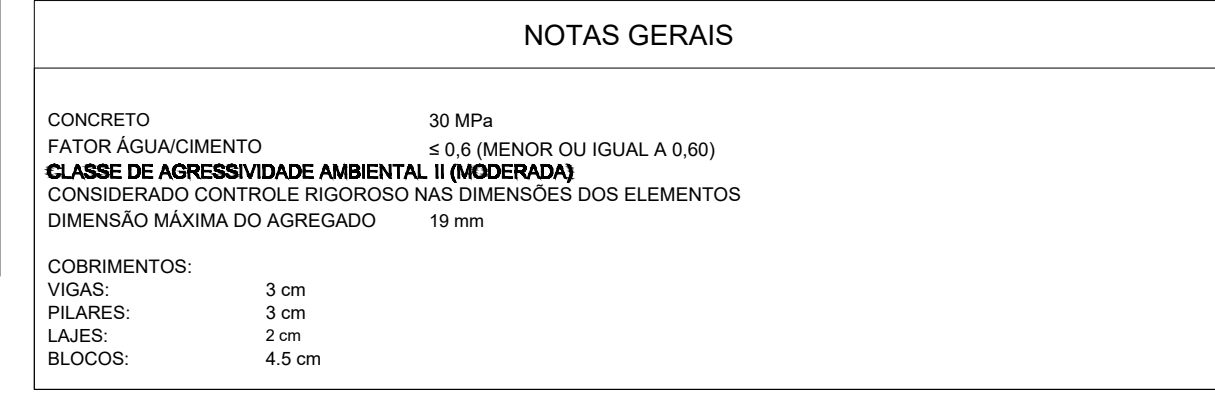
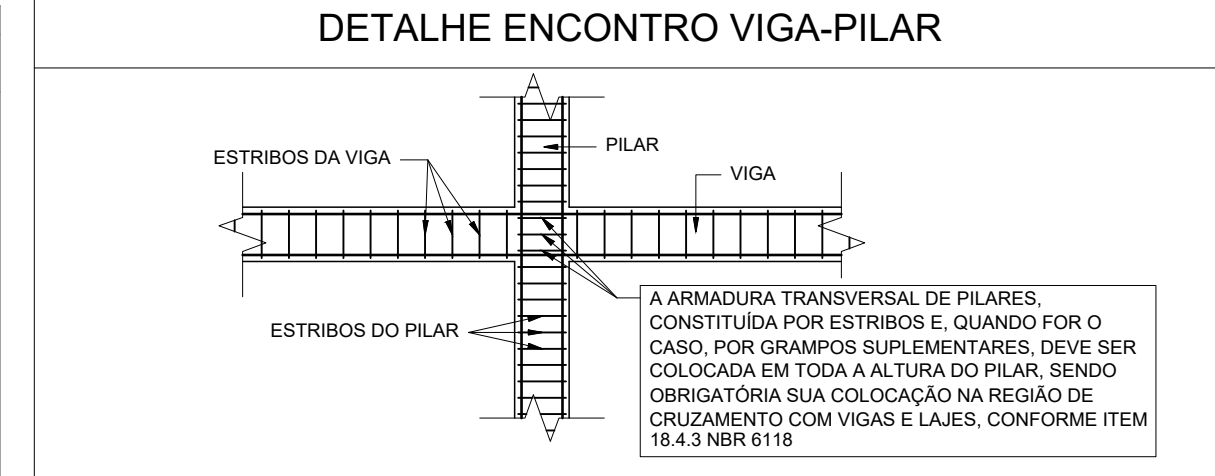
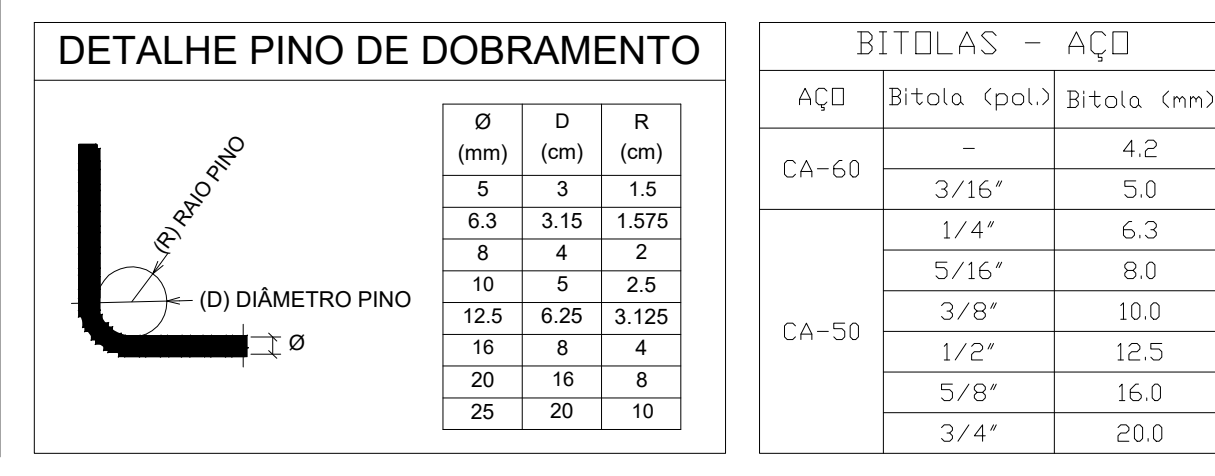
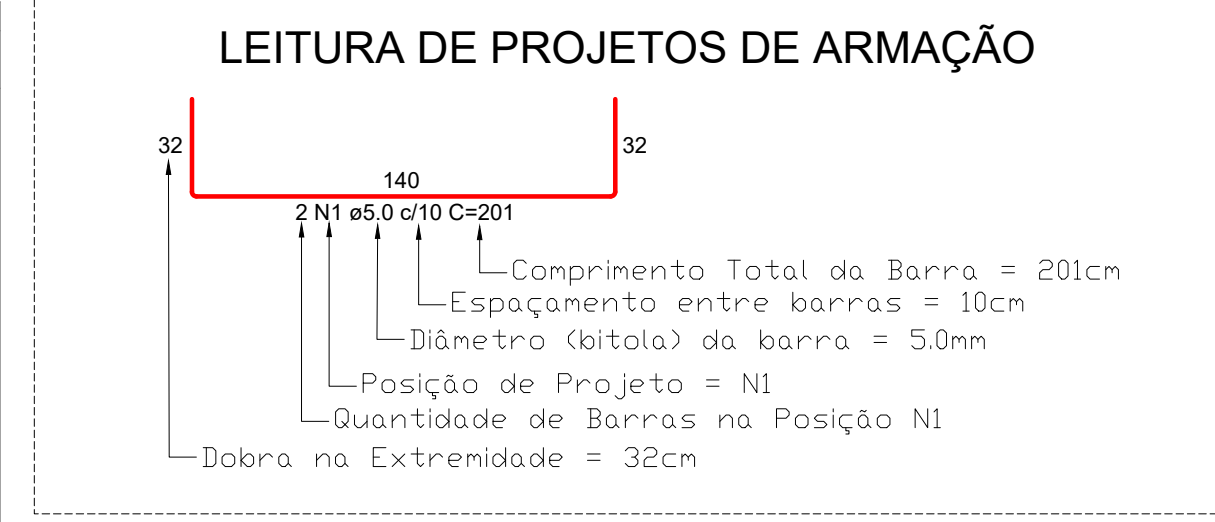
Simbologia	Estacas	Nome	d (cm)	Quantidade
	E30	30.00	10	
	E30	30.00	36	



Legenda dos blocos
escala 1:25

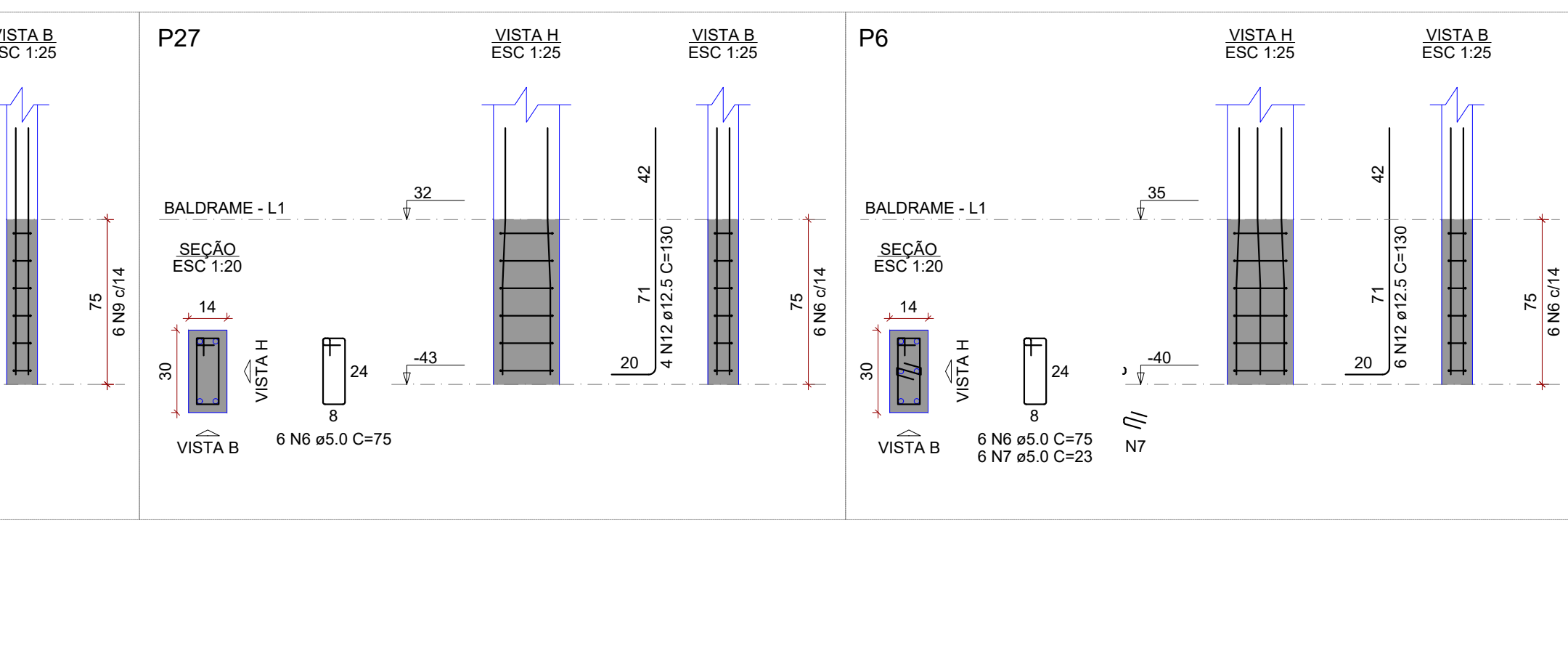
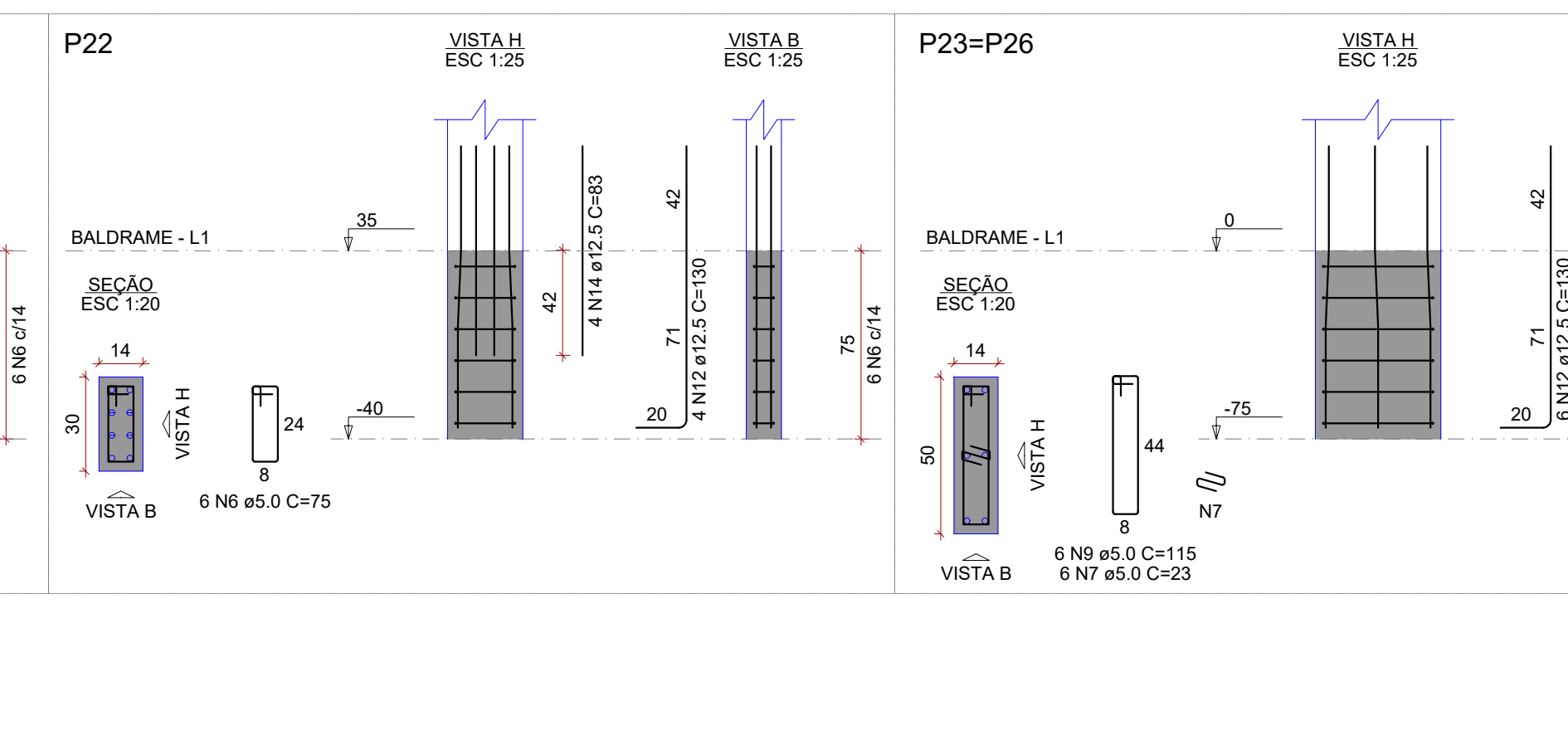
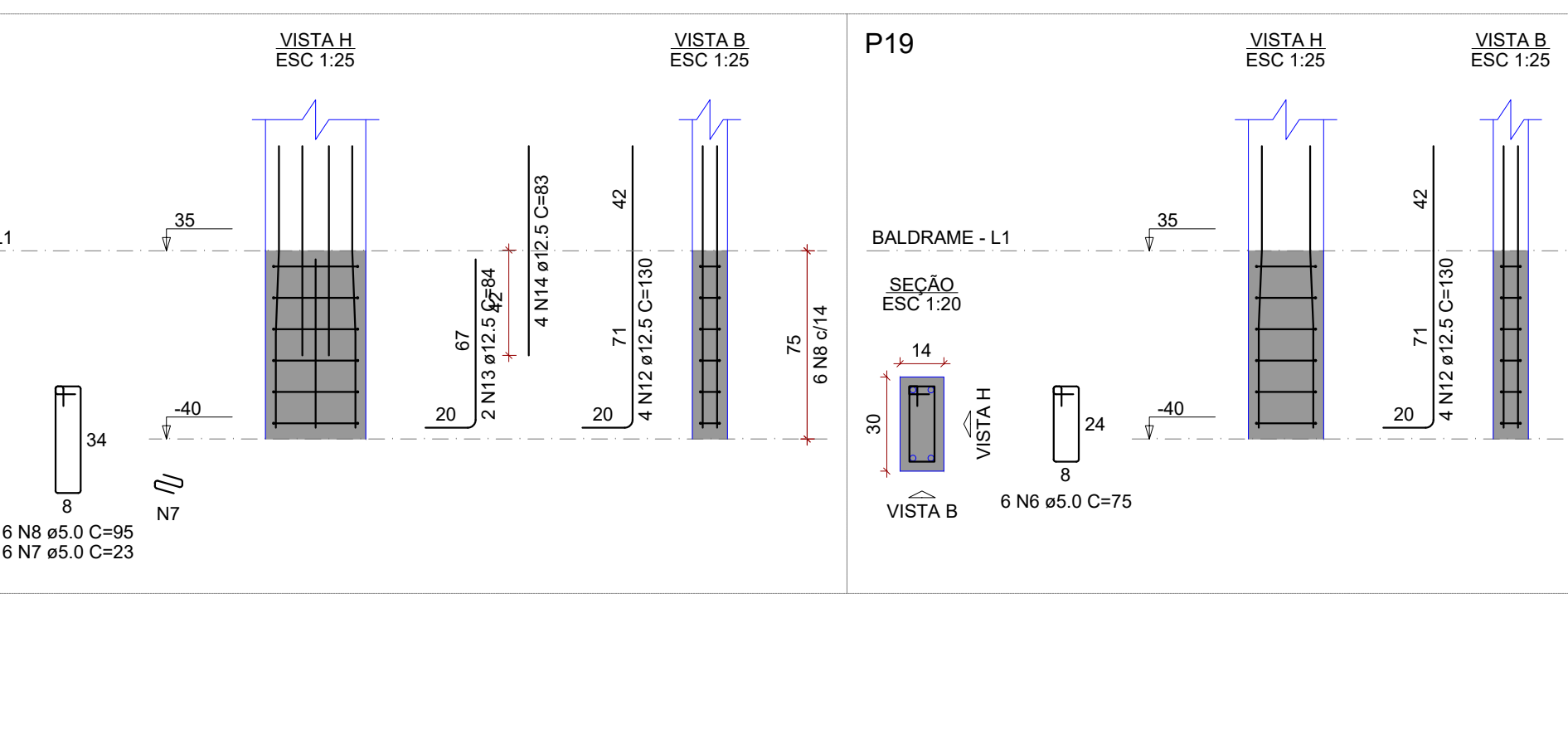
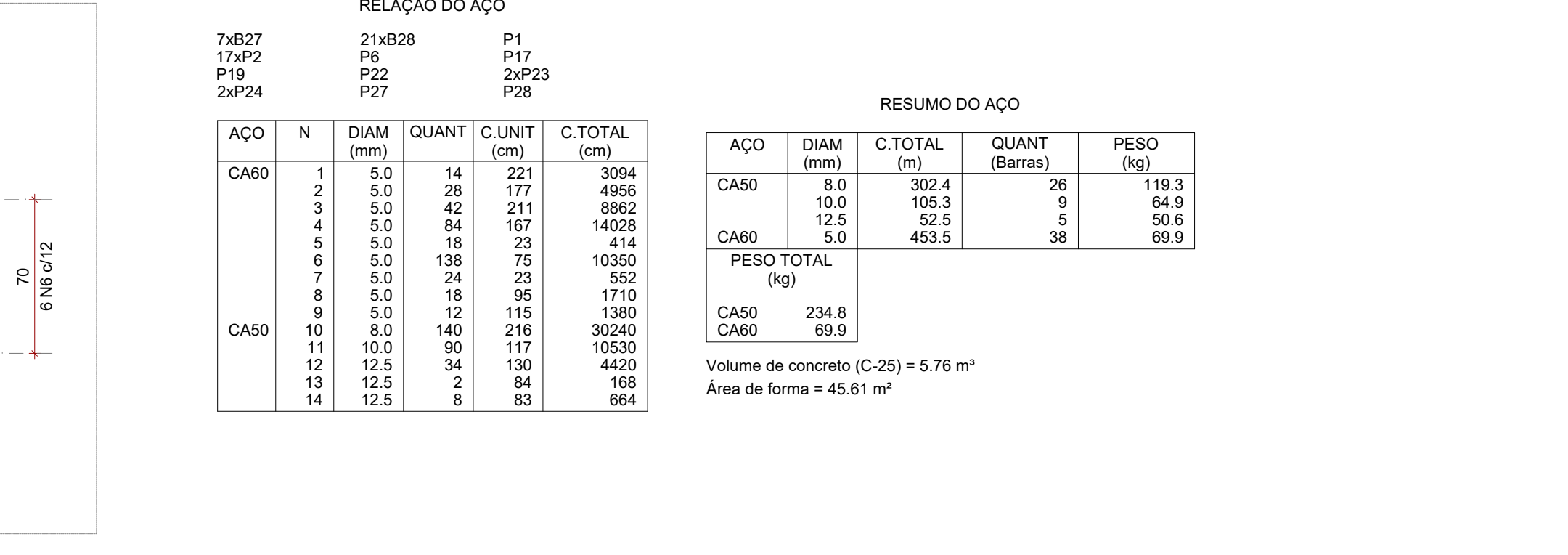
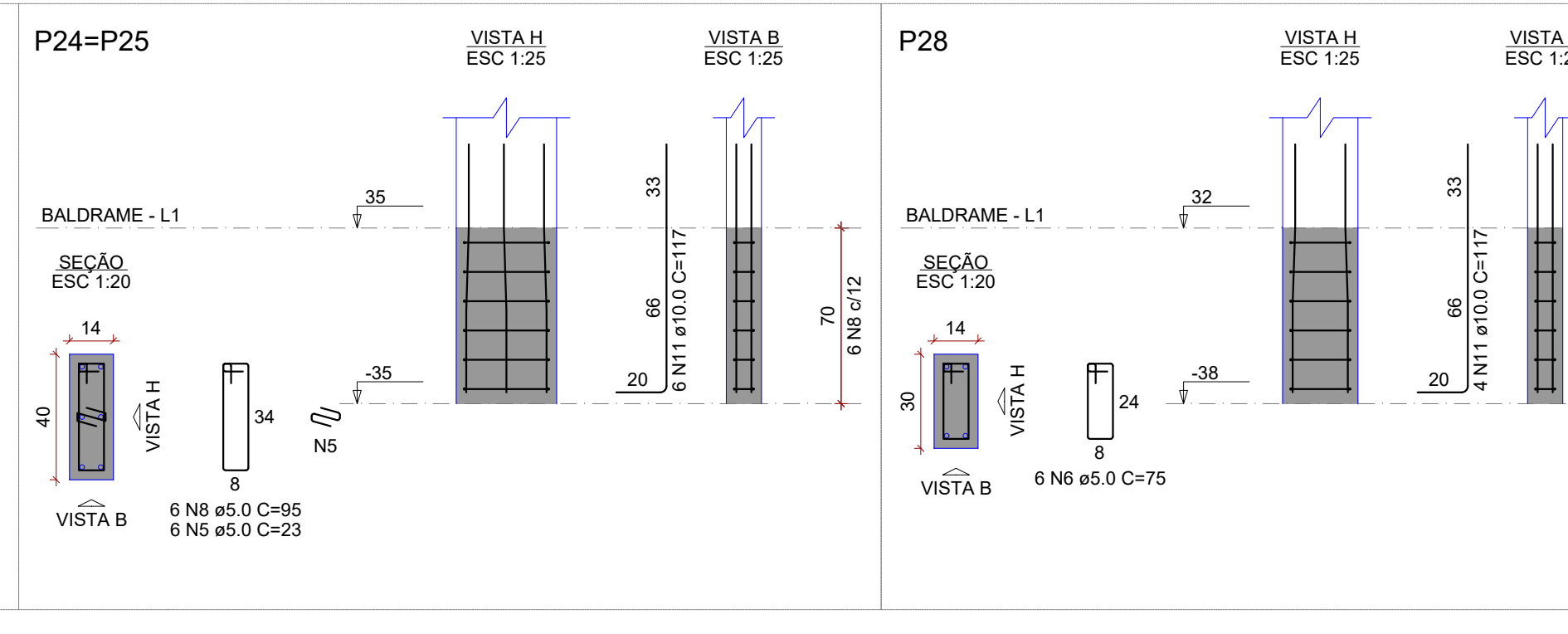
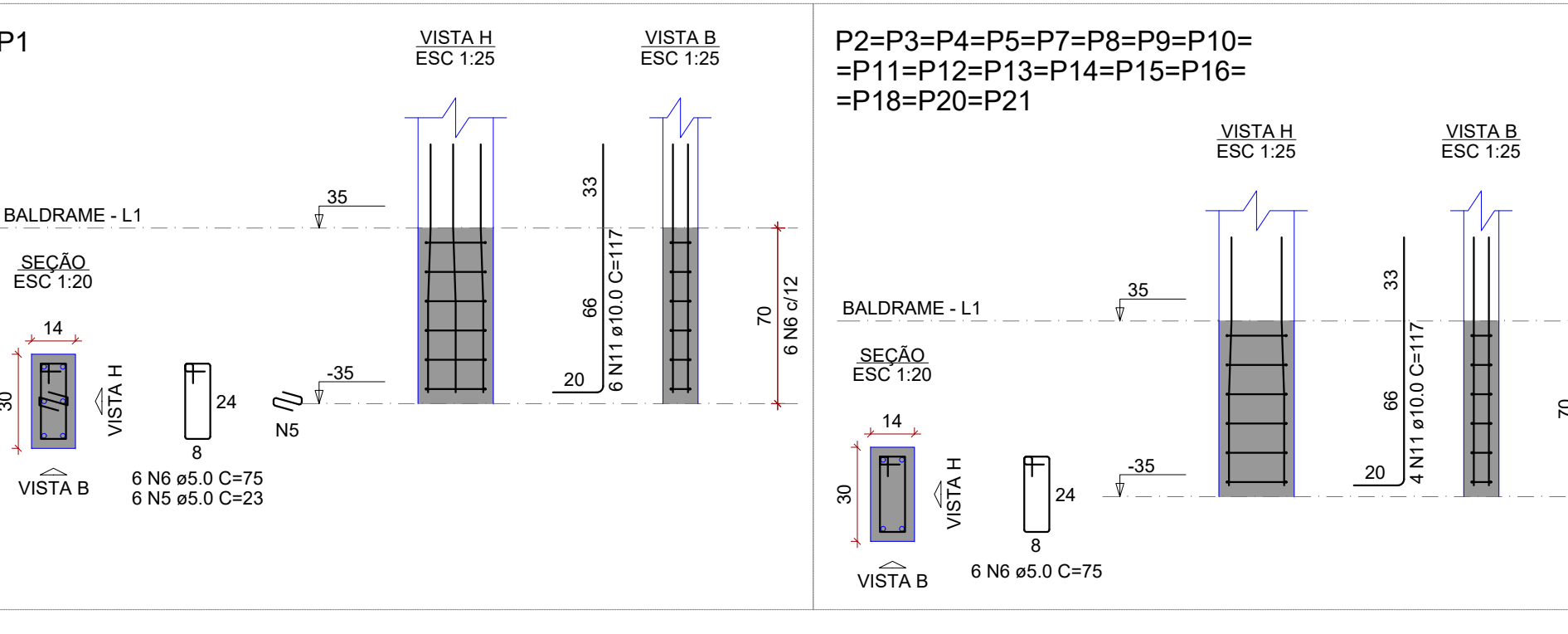
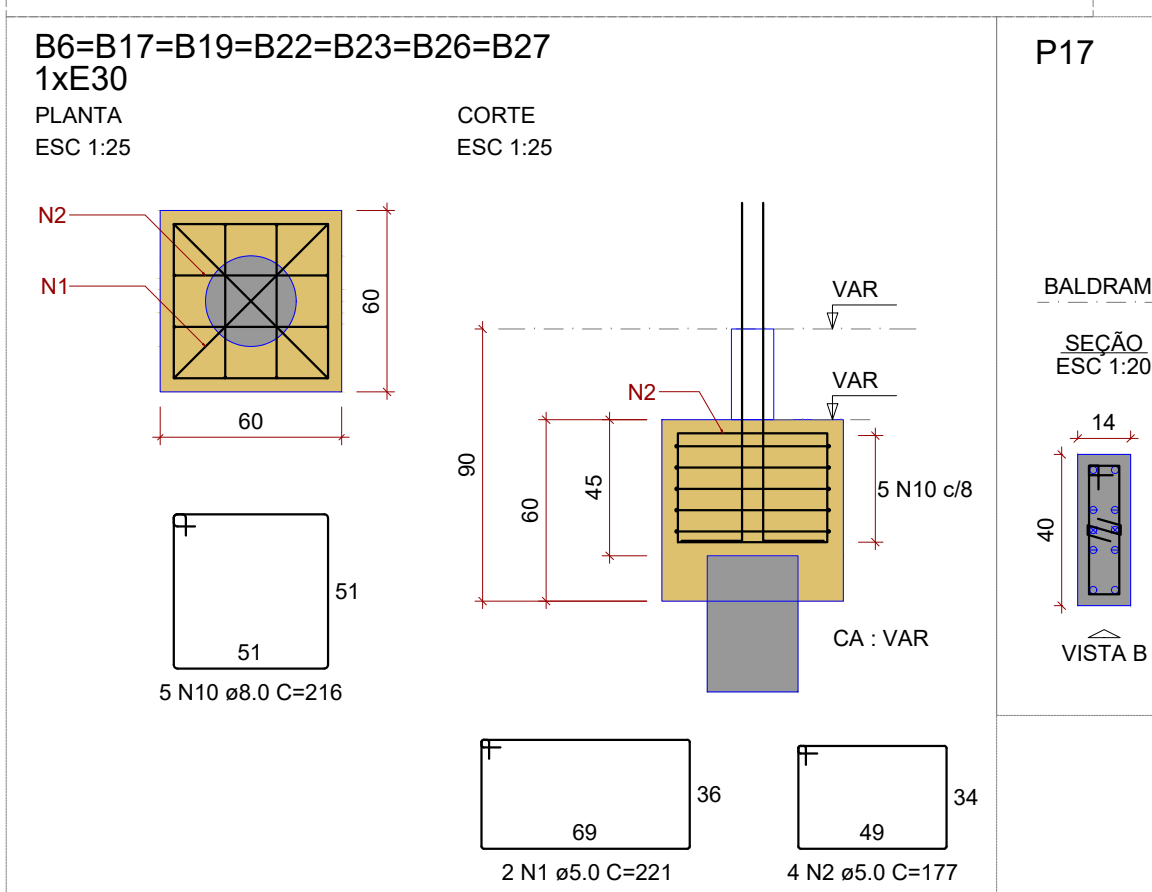
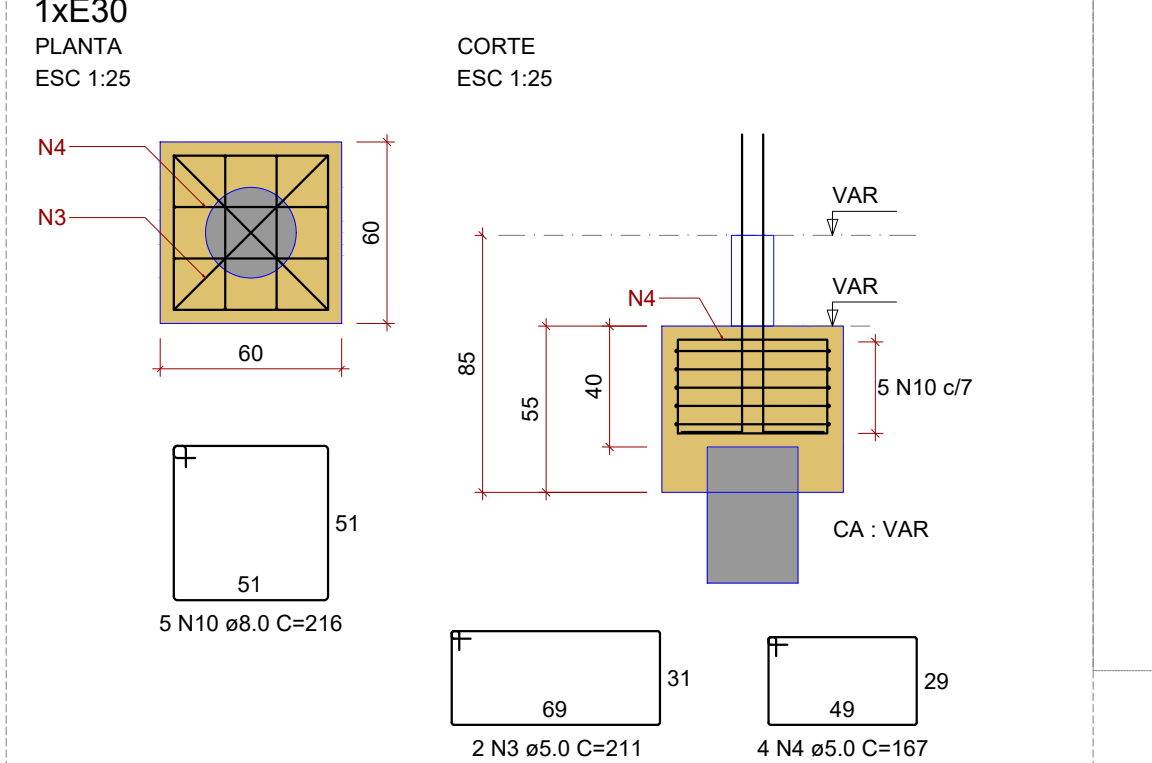


Localização no eixo X		Localização no eixo Y	
Coordenada (cm)	Nome	Coordenada (cm)	Nome
142.03	P11, P18, E3, P23, C7	1761.96	E1
148.89	P1	1751.47	P4
197.03	C3	1587.89	P2, P3, P5, P6
345.03	P12, P19	1542.47	P10
399.53	E1	1492.47	P7
410.78	E7	1526.47	P17
448.89	P24	1419.96	C1
482.58	C4, C8	1408.96	P18
600.53	P2	1404.97	P14
657.02	E4	1396.96	P12
658.52	P7	1396.97	P12
707.03	P27	1396.96	P15
802.52	P8, P13	1396.97	P12
802.52	P3	1072.47	P19, P20, P21, E2
1022.48	P26	1064.47	P18, P22
1071.88	E5	1038.97	C2
1079.88	P21	814.97	E3, E4, E5, E6
1084.89	P25	557.47	P23, E7, P24, E8, P26
1213.03	P15	556.98	P25
1241.03	P9	430.47	P27, P28
1246.89	C5, C9	302.50	C3, C4, C5, C8
1318.39	E8	207.50	C9, C10
1318.39	E8	207.47	C1, C2



BLOCOS DE FUNDAÇÃO

B1=B2=B3=B4=B5=B7=B8=B9=B10=B11=B12=B13
=B14=B15=B16=B18=B20=B21=B24=B25=B28
1x30
PLANTA
ESC 1:25



CARIMBO DE APROVAÇÕES

IDENTIFICAÇÃO DO ESCRITÓRIO / CONSTRUTORA

ICENGE CATALÃO
ENGENHARIA & CONSULTORIA
RUA NASSIM AGEL, Nº 411 - CENTRO, CATALÃO / GO
(64) 3443-1688 - www.icenge.com.br

TIPO DE USO: EDIFICAÇÃO COMERCIAL

CASA DE VELÓRIO DO CEMITÉRIO MUNICIPAL DE SANTO ANTÔNIO DO RIO VERDE

ENDEREGO DA OBRA:
RUA JOAQUIM RABELO DE SOUZA - DISTRITO DE SANTO ANTÔNIO DO RIO VERDE - CATALÃO / GO

PROPRIETÁRIO: PREFEITURA MUNICIPAL DE CATALÃO / GO CNPJ: 01.505.643/0001-50

AUTOR DO PROJETO: ENG. PEDRO SILVA DE SOUZA CREA Nº 1016279248/D-GO

RESPONSÁVEL TÉCNICO: ENG. PEDRO SILVA DE SOUZA CREA Nº 1016279248/D-GO

DESCRIÇÃO:
- Planta de Localização
- Fundação
- Estacas
- Vistas 3D

ÁREA:
Conferir em projeto arquitetônico

ESCALA: INDICADAS

DATA: 03 / 02 / 2024

DESENHO: ADORADOR (64) 3443-1688

REVISÃO: 17 / 02 / 2024